

ISOMAG ™

THE FRIENDLY MAG METER

Converter

ML 400 SA

EX CONVERTER



Hazardous area		Categories according to 94/9/CE Directive
Gas, mists or vapours	Zone 0	1G
Gas, mists or vapours	Zone 1	2G
Gas, mists or vapours	Zone 2	3G

**CERTIFIED CONVERTER [EEXIA]IIB T4, FOR SAFETY AREA.
AVAILABLE FOR SENSOR MS 4000 IN SEPARATE VERSION**

The manufacturer guarantees only English text.
Available on our web site: www.isoil.com

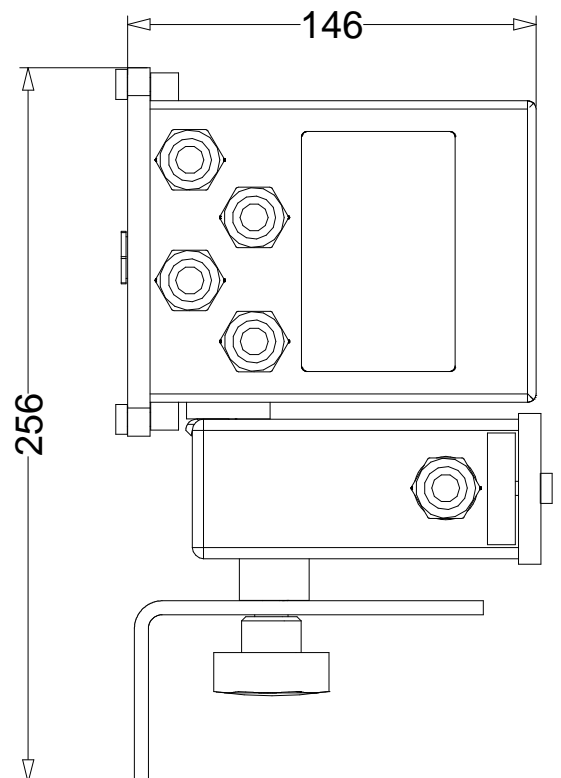
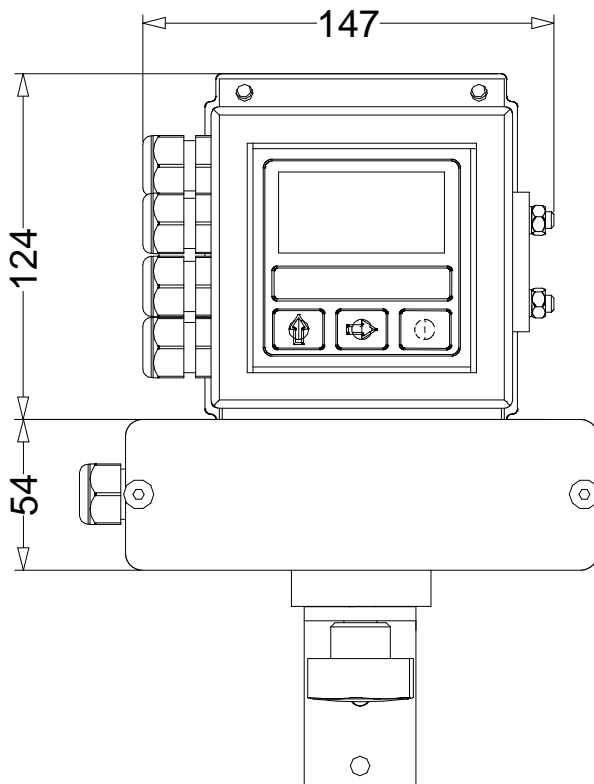
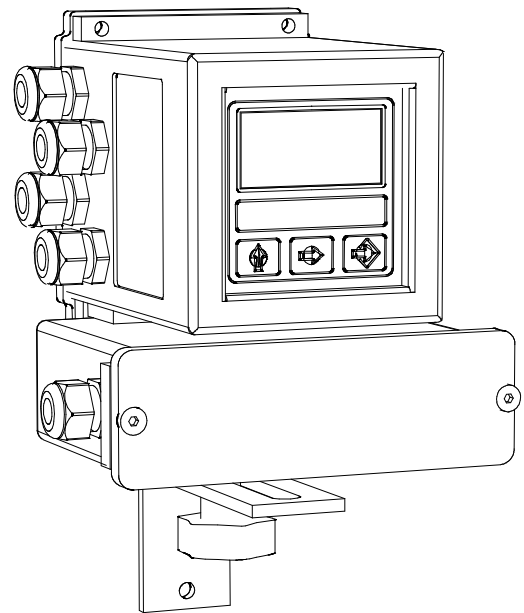
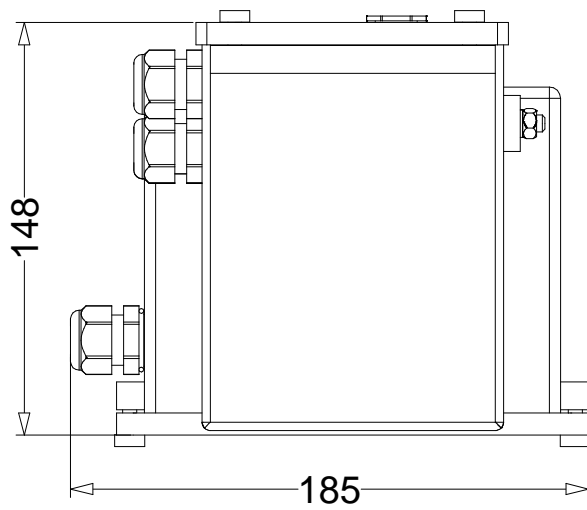
ISOIL 
INDUSTRIA

The solutions that count

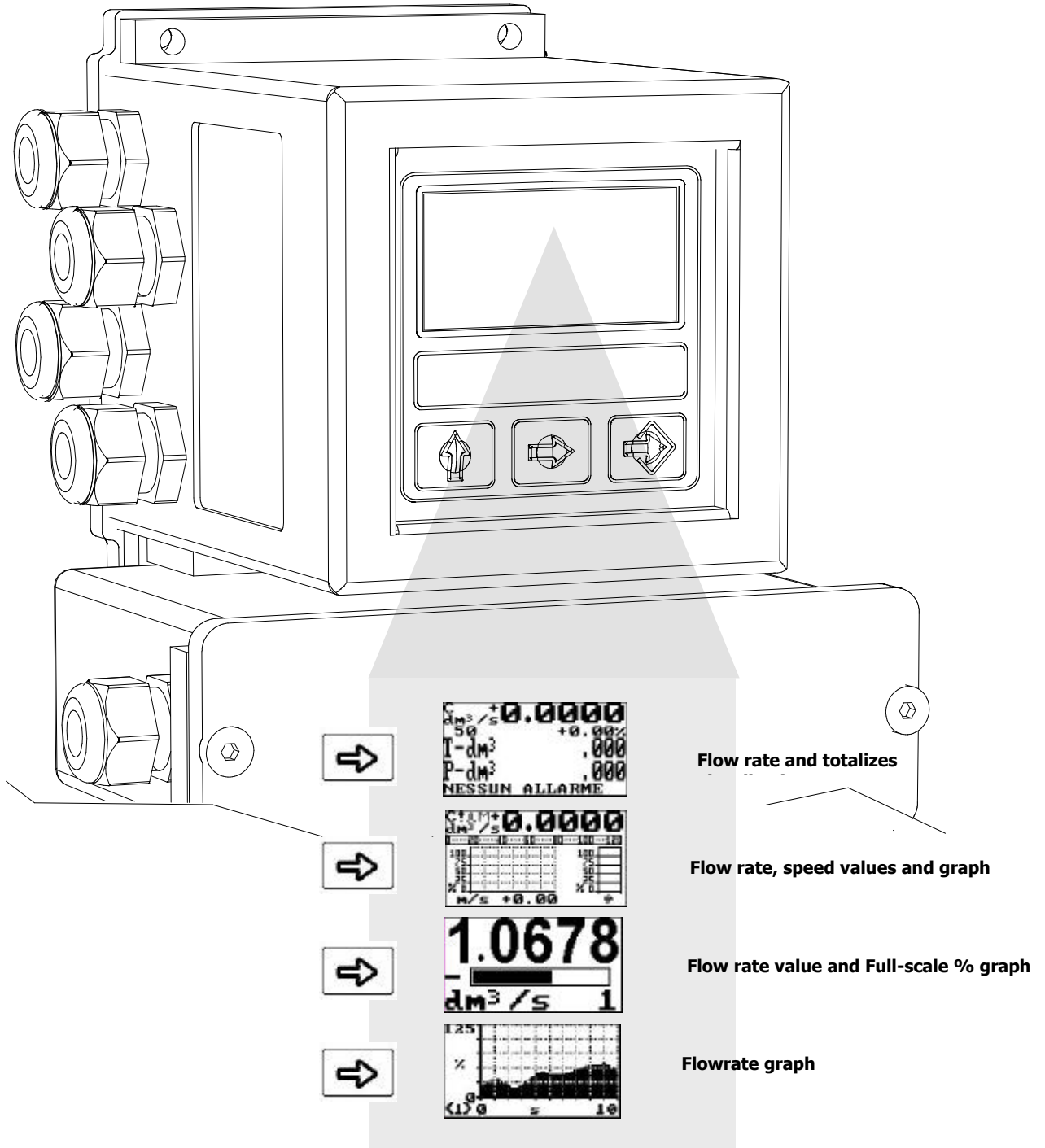
TECHNICAL DATA

Available For	<input type="checkbox"/> Sensor MS 4000
Min. Conductivity	<input type="checkbox"/> 5 mS/cm
Material Box	<input type="checkbox"/> Painted carbon steel
Dimensions	<input type="checkbox"/> See below
Protection Degree	<input type="checkbox"/> IP67
Cables	<input type="checkbox"/> C014/C016 (max 500 m)
Cable Glands	<input type="checkbox"/> standard PG 11
Ambient Temperature	<input type="checkbox"/> -20...+60°C
Display LCD	<input type="checkbox"/> Graphic display 8 lines x 16 Characters 128x64 pixels with back light
Keyboard	<input type="checkbox"/> 3 membrane keys
Digital Input	<input type="checkbox"/> Programmable function
Data Logger	<input type="checkbox"/> 32 values
Bi-Directional	<input type="checkbox"/> Yes
FS Value	<input type="checkbox"/> 0,4...10 m/s
Diagnostic Functions	<input type="checkbox"/> Yes
Empty Pipe Detect	<input type="checkbox"/> Yes
Galvanic Isolation	<input type="checkbox"/> All the inputs/outputs are galvanically isolated from power supply up to 500 V
Data Storage	<input type="checkbox"/> EEprom, battery backup RAM
Programming Plug In	<input type="checkbox"/> Protected plug in for the connection to PC or hand terminal
CE Certification	<input type="checkbox"/> Yes
Measurements Tolerance	<input type="checkbox"/> Flow rate (volume) = $\pm 0,05\%$ v.l. <input type="checkbox"/> Out 4/20 mA = $\pm 0,08\%$ v.l. <input type="checkbox"/> Frequency Out = $\pm 0,08\%$ v.l.
Repeatability	<input type="checkbox"/> Better than 0,01%
Power Supply	<input type="checkbox"/> 90÷265 Vac – 45÷60 Hz; 10÷63Vdc/15÷45 Vac-45÷66Hz; 10÷35 Vdc
Max Consumption	<input type="checkbox"/> 25 VA 23 VA 21 W

OVERALL DIMENSIONS



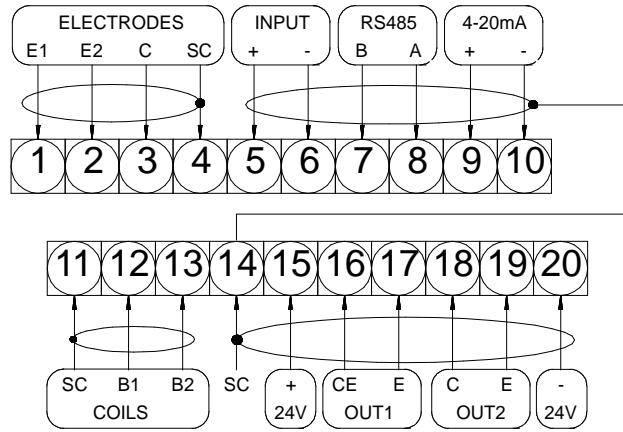
VISUALIZATION PAGES



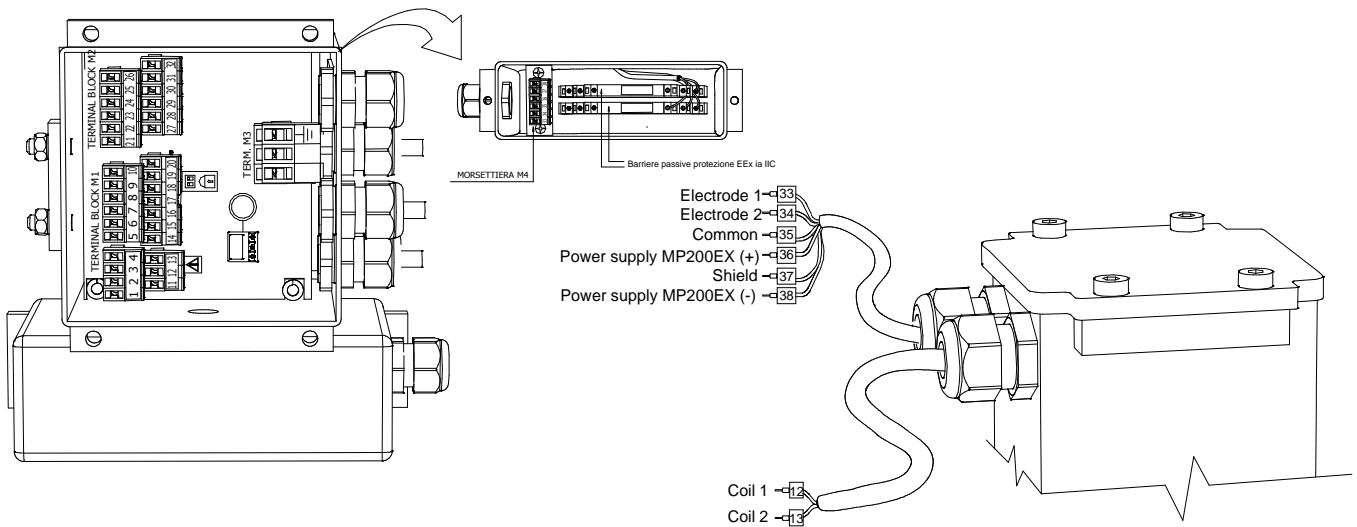
Different possibilities of visualization with the simple key pressure

ELECTRICAL CONNECTIONS

TERMINAL BLOCK

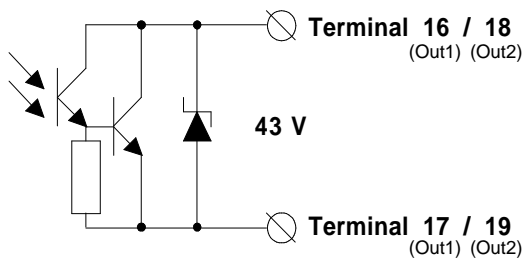


SENSOR / CONVERTER CONNECTIONS

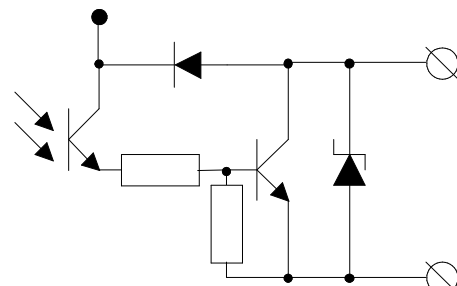


OUT

OUT ON/OFF STANDARD (1250 Hz MAX)



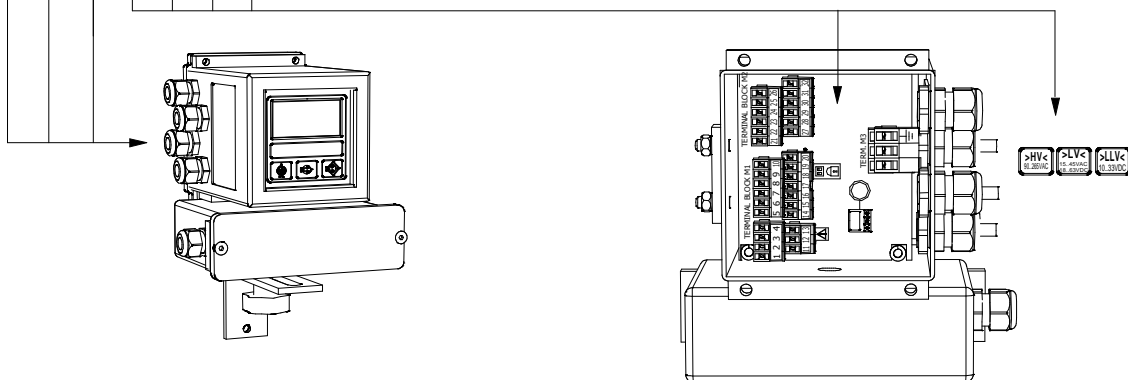
HIGH FREQUENCY (12.500 HZ)



HOW TO ORDER

ML400SA	Display
B	Graphic LCD WSTN back light display execution, point matrix 128 x 64, 8 line each of 16 characters and 3 programming keys
Housing material - Protection rate	
0	Painted Carbon Steel (painted RAL6028) ,protection rate IP67
Version	
B	Separate version for wall monting, complete with mounting accessories in Carbon Steel (painted RAL6028)
Power supply	
1	Power supply : 90 ... 265 V 45/66 Hz
2	Power supply : 18...63 V dc / 15...45 V ac - 45...66 Hz
3	Power supply : 10 ... 35 V dc
9	Power supply : other
Analogue output	
B	Analogue output 0/4...20/22 mA
Serial Interface	
2	RS485 Serial Interface
Additional module	
A	Without additional module
C	ME200; n. 2 additional ON / OFF programmable output
D	ME201; n. 2 additional ON / OFF programmable output (one of them at 10 KHz frequency)
E	ME202; additional 0/4...20 mA + n.2 ON / OFF programmable output
F	ME203; n. 1 RS232 serial interface + n.2 additional ON / OFF programmable output , 2A - 60 Vca, 60W 125 VA)
G	ME204; n. 1 RS232 serial interface + additional 0/4...20 mA + n.2 ON / OFF program. output Vca, 60W 125 VA)
P	ME205; n. 2 relè output (each with 1 NO contact + 1 NC contact, 2A - 60 Vca, 60W 125 VA)
T	ME207; n. 2 relè output (each with 1 NO contact + 1 NC contact, 2A - 250 Vca, 60W 125 VA)

ML400SA B 0 B 1 B 2 A **CODE EXAMPLE FOR ORDER**



In accordance with a continuous evolution of the Product, the company reserves the right to modify without warning the information contained in this document