

ISOMAG ™

THE FRIENDLY MAG METER

CONVERTER

ML 211

HEATING COUNTER



**MEASURING OF 5 VARIABLES: CAPACITY, ENERGY, INPUT TEMPERATURE, OUTPUT TEMPERATURE, ΔT ;
N° 2 INPUTS ADDED FROM PT 100 (FROM PT 500 OR PT 1000 IF REQUIRED);
BIDIRECTIONAL MEASURE (FOR CALORIES or FRIGORIES);
2 ENERGY TOTALIZERS**

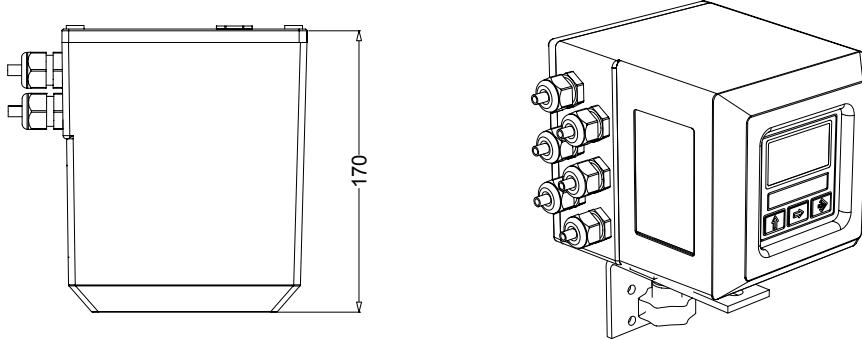
The manufacturer guarantees only English text.
Available on our web site: www.isoil.com

ISOIL 
INDUSTRIA

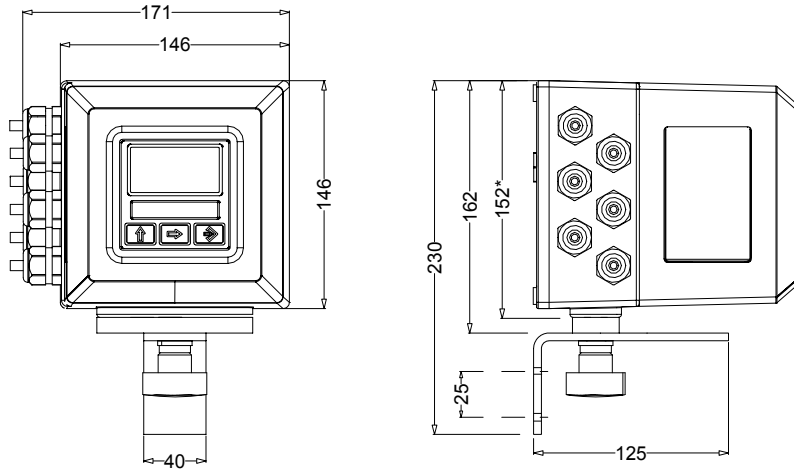
The solutions that count

OVERALL DIMENSIONS

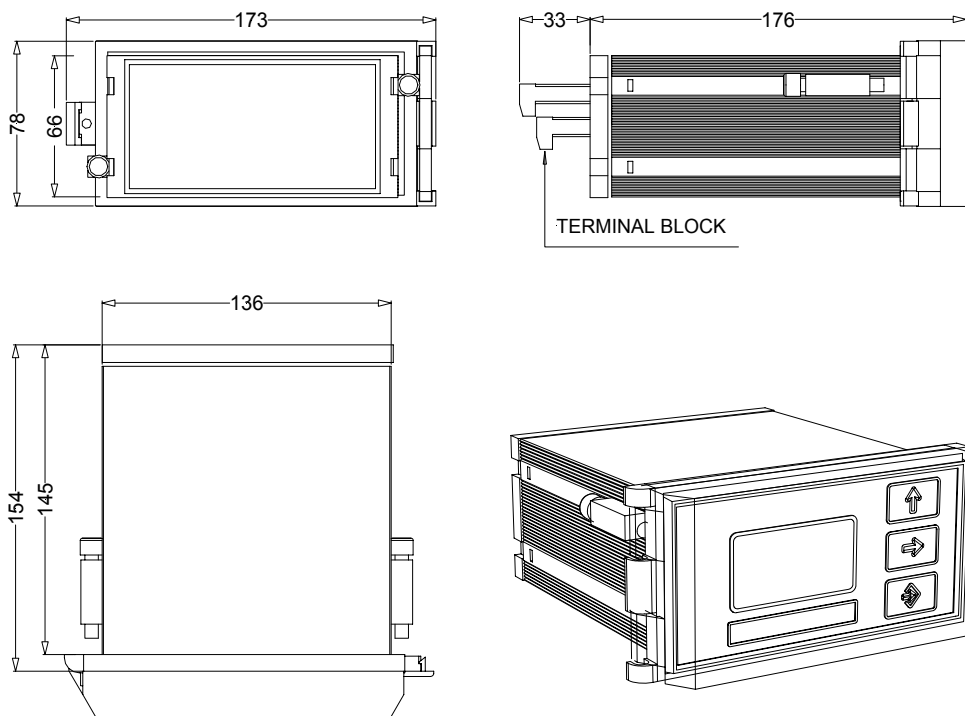
COMPACT VERSION



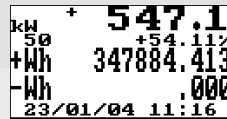
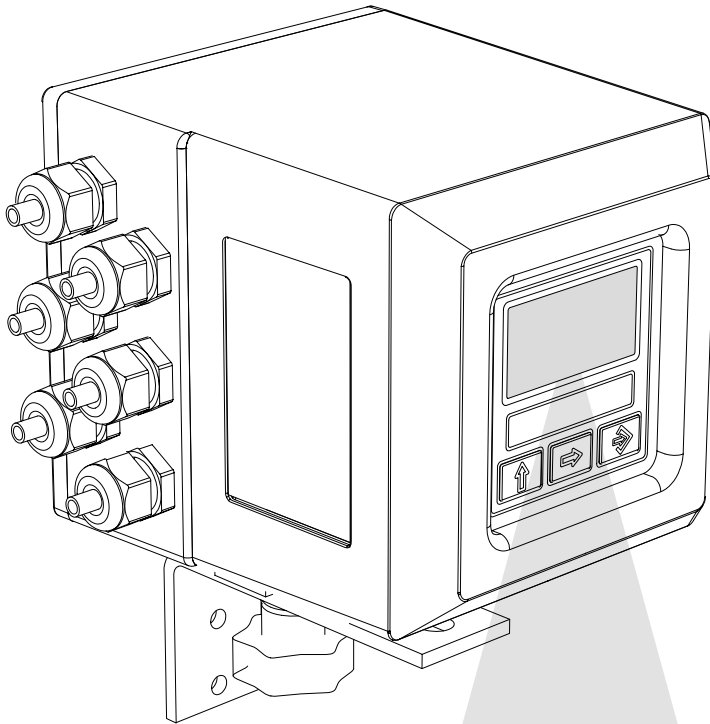
SEPARATE VERSION



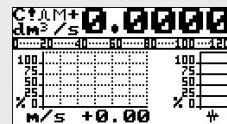
PANEL VERSION



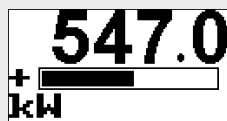
VISUALIZATION PAGES



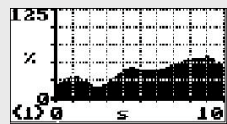
Flowrate and thermal energy totalizers



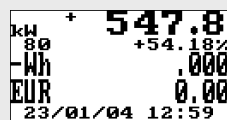
Flowrate, speed values and graph



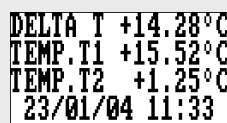
Thermal energy > full scale and graph



Flowrate graph



Thermal energy value with a currency function enabled

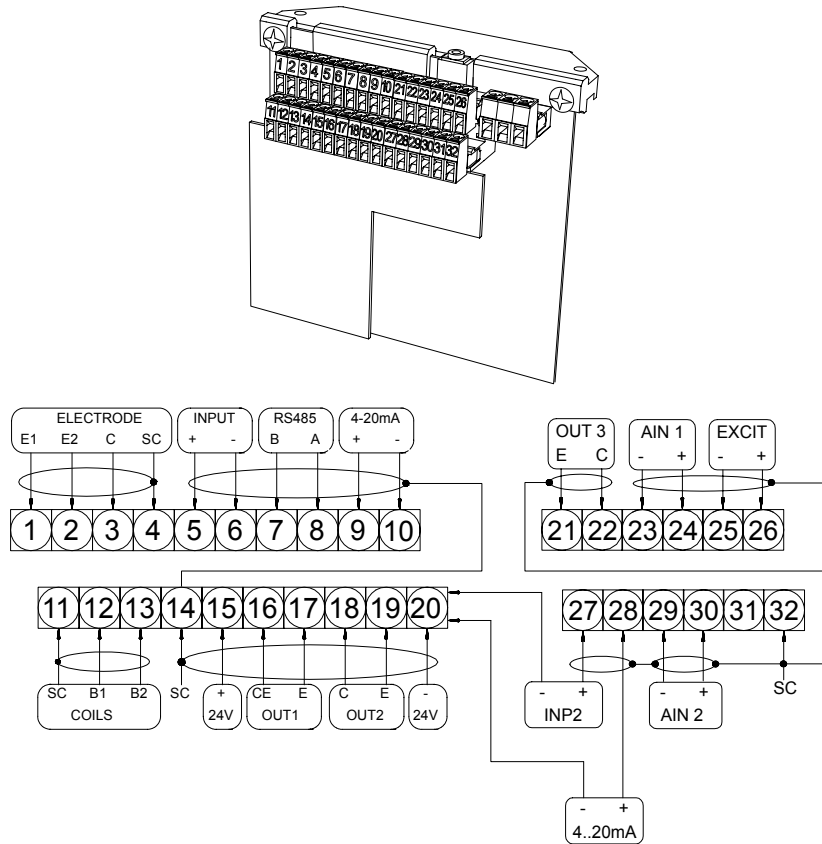


Temperature values

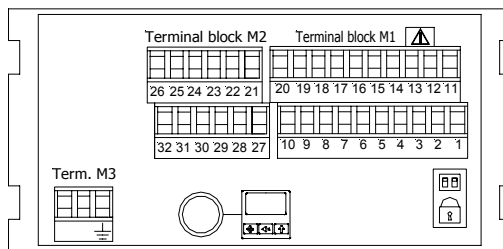
Different possibilities of visualization with the simple pressure of a key

ELECTRICAL CONNECTIONS

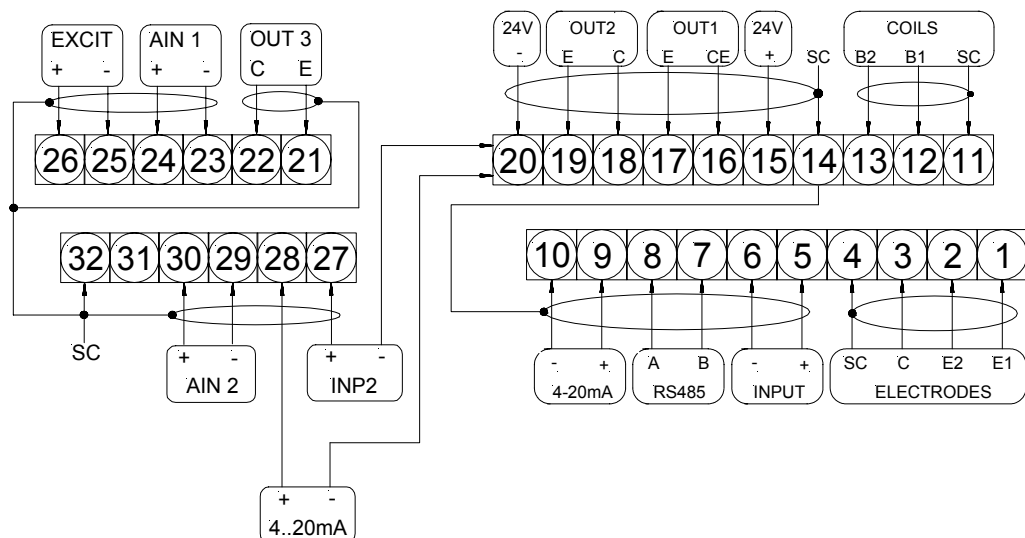
TERMINAL BLOCK: COMPACT/SEPARATE VERSION



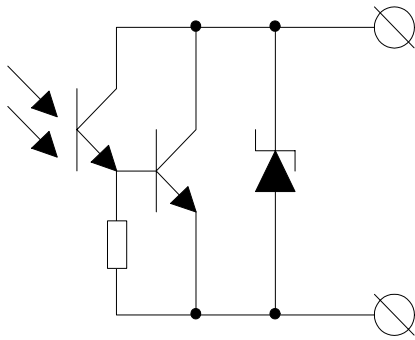
TERMINAL BLOCK: PANEL VERSION



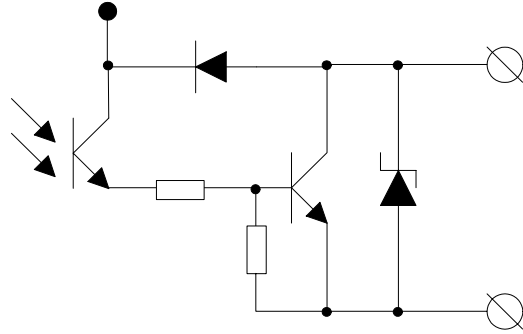
LEGEND:
 SC: Cable shield
 C: COLLECTOR of the on/off out
 E: EMITTER of the on/off output
 AIN1: Input of temp. probe n. 1
 AIN2: Input of temp. probe n. 2
 EXCIT: Power supply for temp. probes



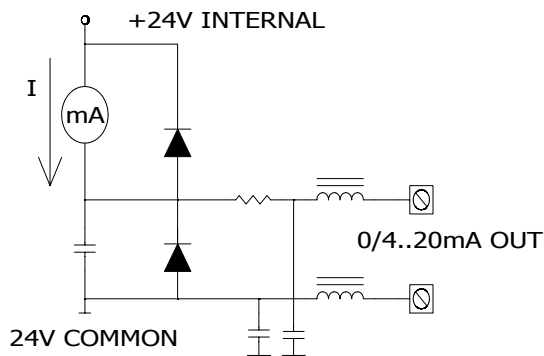
ON/OFF STANDARD OUTPUT



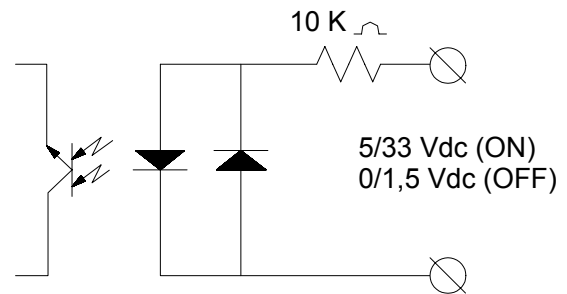
ON/OFF HIGH FREQUENCY OUTPUT (OPT.)



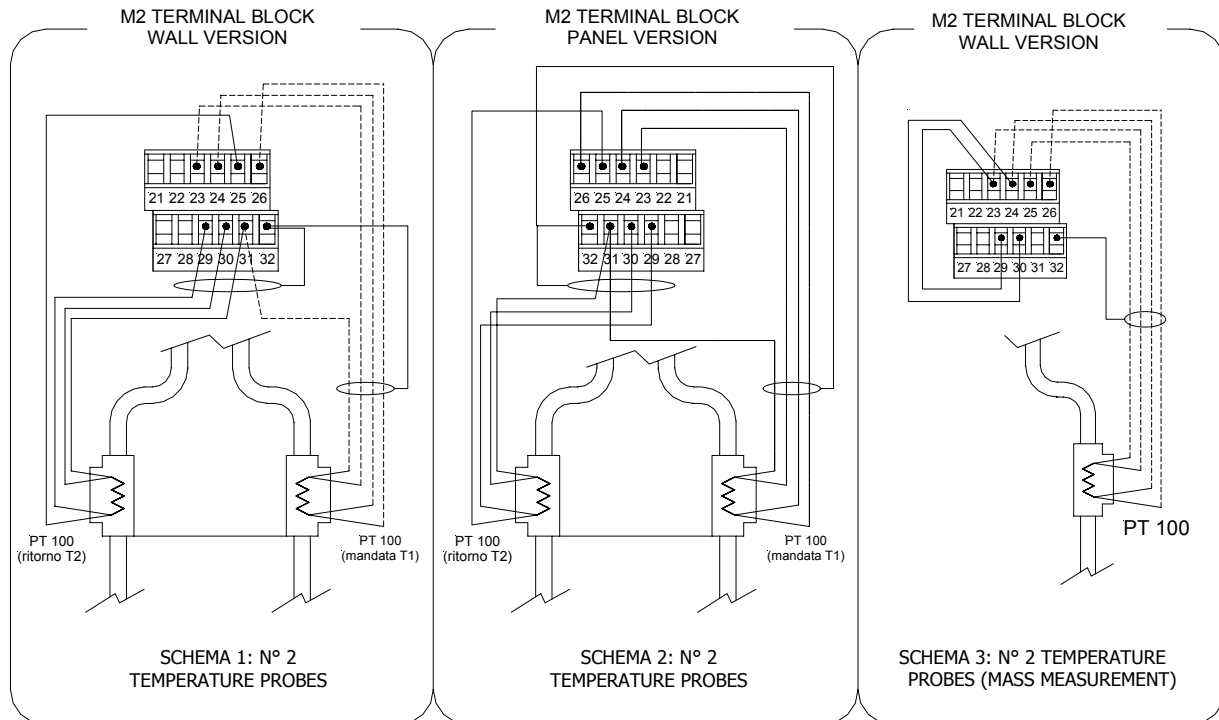
STANDARD ANALOGICAL OUTPUT



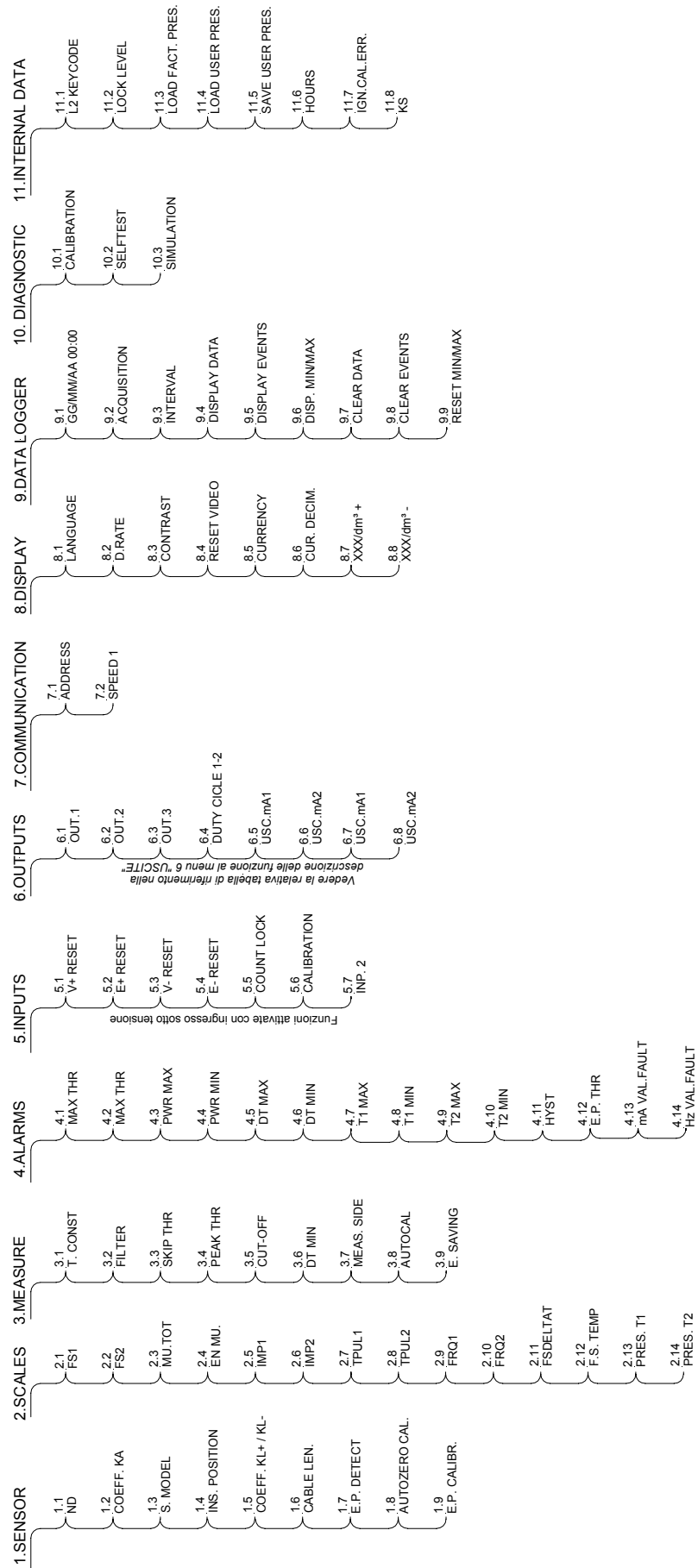
STANDARD DIGITAL INPUT



TEMPERATURE PROBES CONNECTIONS



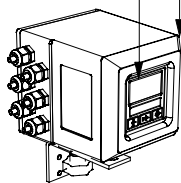
FUNCTIONS



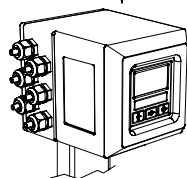
HOW TO ORDER

ML 211	Display
A	Blind version without display and keyboard
B	Graphic LCD WSTN back light display version, point matrix 128 x 64, 8 line each of 16 characters and 3 programming keys
Housing material - Protection rate	
0	Painted aluminum die casting (painted RAL6028) ,protection rate IP67
1	Aisi 304 Electro-polish
2	NORYL UL 94 V-0 black (ONLY "F" VERSION) IP 54
3	NORYL UL 94 V-0 BLACK (ONLY "F" VERSION)+TRANSPARENT FRONTAL COVER IP 65
Version	
A	Compact version with sensor MS.... (liquid maximum temperature 100 °C)
B	Separate version for wall mounting, complete with mounting accessories in Carbon Steel (painted RAL6028)
F	Separate version for front panel mounting according DIN 43700, complete with mounting accessories, dimensions 72 x 144 mm
Power supply	
1	Power supply : 90 ... 265 V 45/66 Hz
2	Power supply : 18...63 V dc / 15...45 V ac - 45...66 Hz
3	Power supply : 10 ... 35 V dc
9	Power supply : other
Analogue output	
A	Without Analogue output 0/4...20/22 mA
B	Analogue output 0/4...20/22 mA
Serial Interface	
1	Without Serial Interface
2	RS485 Serial Interface
Additional module	
H	ME210; n. 2 Pt100 input+ 1 ON/OFF INPUT
I	ME211; n. 2 Pt100 input + additional 0/4...20 mA output+ 1 ON/OFF INPUT
L	ME212; n. 2 Pt100 input + add. 0/4...20 mA out+1 ON/OFF INPUT+ n. 1 ON/OFF OUT
M	ME 220 : d. logger r. t. c. ; 128K record : F.R. ;tot.+/-; date/time)
N	ME 221 : d. logger r. t. c. ; 128 K record : F.R.;tot.+/-; date/time ; n° 1 RS 232
O	ME 222 : d. logger r. t. c. ; 128K record : F.R.;tot.+/-; date/time ; n° 1 RS 232 , n° 1 RS 485+1 A.I.
P	ME210 + ME 220
Q	ME211 + ME 220
R	ME212 + ME 220
S	ME210 + ME 221
U	ME 100 ; modulo Profibus DP + MODULO ME 210
Z	Other

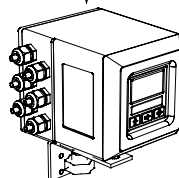
ML 211 B 0 A 1 B 2 A EXAMPLE OF CODE ORDER



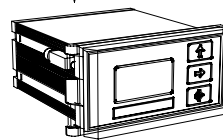
ML 211



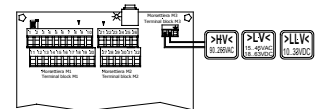
COMPACT VERSION



SEPARATE VERSION



PANEL VERSION



PCB BOARD

In accordance with a continuous evolution of the Product, the company reserves the right to modify without warning the information contained in this document